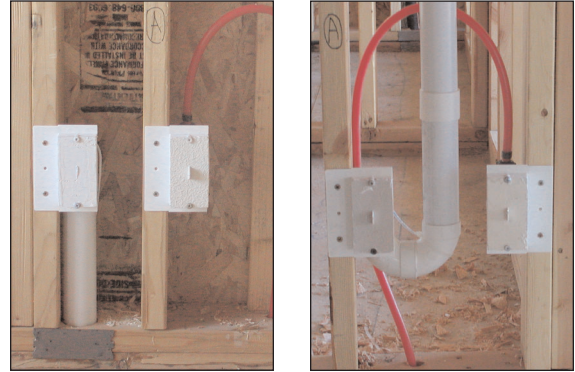


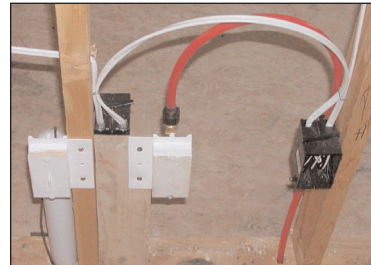
4 Basic principles to be used in Vacuum piping for wet pick up.

These principles have been developed to keep water moving forward and to minimize any puddling or chance of backwards water flow.

1. All inlets must start by going down; therefore any inlet lifting up must have a **P-trap**. When the vacuum is turned off, this will catch any moisture left in the vertical pipe to avoid having water come out of the inlet valve.



2. After a vertical lift, there must be a **High Point** before starting a lateral run. This will prevent any moisture left in the lateral run from running back into the vertical pipe.



3. All lines must **Drop-in** to the main trunk line, with a step down before any tee or group of tees.



4. Any inlet lines lifting to join the main line, must tee **In-front** of lines joining from upper levels.

